

April 2019 / An Giblean 2019

Eden Court

**OUR
ARTISTIC
PROGRAMME**
AM PRÒGRAM
EALAIN AGAINN

Introduction

Our artistic programme aims to be diverse, inclusive and world-class. It intends to help our audiences see the world in new ways, to see themselves on our stages, on our screens or hanging in our galleries. We hope it entertains, surprises and moves.

We believe everyone is creative and that's why we deliver a packed studio programme of activities and classes at our home in Inverness and why we deliver projects in communities across our entire region.

We have recently restructured our Artistic Department to provide more, and better, support to artists and companies. We want to be transparent about an artist's pathway through Eden Court and to involve artists in the decisions that affect them.

We're a multi-artform venue with a variety of performance spaces. We can present small intimate work in one of our two purpose-built studios, small and mid-scale work in the One Touch Theatre (262 seats) and large-scale productions in the Empire (840 seats).

We appreciate and acknowledge that the boundaries around specific artforms continue to blur: Dancers use digital, actors can be musicians, the boundaries between conservatoire-trained talent and non-conservatoire-trained talent are complex, and so-on. We're interested and motivated by these challenges, debates and working practices. We enjoy talking about them.



**THE CHEVIOT,
THE STAG AND THE
BLACK, BLACK OIL**
National Theatre Live
+ Dundee Rep Theatre

Live Performance

Our Live Performance team programme work that involves one or more person on a stage, or in a space, with an audience.

We are interested in hearing from artists and companies who create and make work on all scales. We present everything from intimate contemporary dance through to large-scale musical theatre. We are particularly interested in presenting work funded by Creative Scotland.

We are proud to be a home for our national companies: Scottish Ballet, Scottish Opera and National Theatre of Scotland, Scottish Chamber Orchestra, Royal Scottish National Orchestra and the BBC Scottish Symphony Orchestra.

Theatre, music, comedy, circus, dance, musicals, performance poetry, classical, contemporary, avant-garde, commercial, popular, new, experimental, indoors, outdoors – these are some of the words that describe the breadth of our programme.

Film

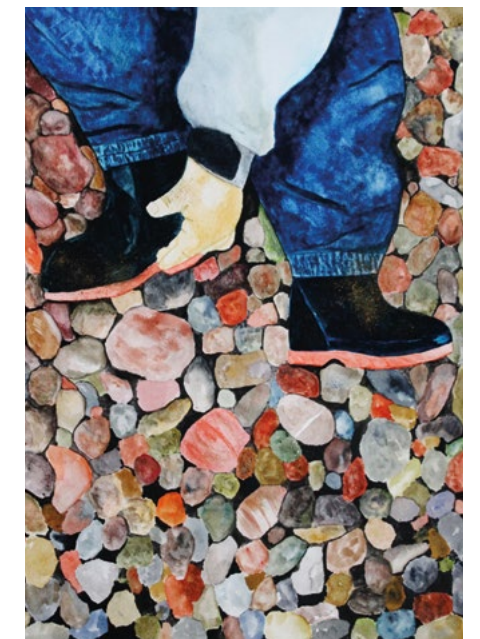
We have two beautiful, modern cinemas. We're proudly independent from any of the well-known cinema chains. Our independence allows us to programme a diverse programme of new releases and new works from emerging film makers. We try hard to present film that talks to diverse communities of people.

We're supportive of Scottish filmmakers as well as showing world-cinema, independent film, documentaries and retrospective screenings.

Our annual Inverness Film Festival has a loyal and growing audience that packs in over 50 titles in a five-day period. Taking place every November it's a highlight in our annual calendar.



ALAN JAMES MCLEOD
Jul 2019



ELLIOT'S STORIES –
AGA SPALDING
May 2019

Visual Art

We have four gallery spaces. We work with artists to present a varied programme of exhibitions showcasing the work of both established artists and those who are emerging.

Our OneTouch Gallery is currently hosting exhibitions from the FLOW photography festival.

Our Stalls Gallery is where established artists from across Scotland and the world can exhibit and sell their work.

The Second Floor Gallery will be a creative space where Highland artists, young and older, established and emerging, can exhibit and sell their work.

Our Blink Gallery is our space dedicated to the local community and the creative work they produce.



UNDER CANVAS

Gaelic + Traditional Arts

Inverness is the capital of the Highlands and by default the capital city of the Gaelic language. We have a loyal Gaelic speaking audience and an even bigger audience for Gaelic-routed traditional arts.

We run a Gaelic Youth Theatre in partnership with Highland Council and, in the Summer of 2018, worked with Fèis Rois to programme contemporary traditional music on our outdoor stage 'Under Canvas'.

Over the coming years we will be investing in our Gaelic programme and our Gaelic welcome to ensure we are as accessible as possible for those who are Gaelic, are Gaelic learners and those inquisitive about the language, its heritage and its culture.



MÀNRRAN

Na h-Ealain Ghàidhlig + Dhualchasach

'S e prìomh-bhaile na Gàidhealtachd a th' ann an Inbhir Nis, agus mar sin prìomh-bhaile na Gàidhlig. Tha luchd-èisteachd dìleas againn aig a bheil an cànan, agus luchd-èisteachd fiù 's nas motha ann do na h-ealain dhualchasach Ghàidhealach.

Bidh sinn a' ruith Theatre Gàidhlig do dh'Òigridh ann an compàirteachas ri Comhairle na Gàidhealtachd, agus as t-samhradh 2018, bha sinn ag obair còmhla ri Fèis Rois gus prògram de cheòl tradaiseanta a chur air aghaidh air an àrd-ùrlar air a' bhlàr a-muigh, 'Under Canvas'.

Sna bliadhnaichean romhainn, bidh sinn a' tasgadh nar prògram Gàidhlig agus a' cur ris an fhàilteachadh Ghàidhlig a chuireas sinn air Gàidheil, luchd-ionnsachaidh a' chànan, agus daoine aig a bheil ùidh sa chànan agus an dualchas.

How To Approach Us About Your Work + How We Make Programming Decisions

There are some important considerations to our decision-making processes and various deadlines that are useful for artists and companies to be aware of.

We publish two brochures/seasons per year in March for the season April – September and in September for our season October – March.



FAUST
Apr 2019

Programming our Theatres

EMPIRE THEATRE – 840 SEATS

If you are a company or an artist wanting to present work in the Empire Theatre (larger mid-scale work and large-scale work) you need to contact us at least twelve months in advance for dates between September and May. June – August tend to be quieter months and so we occasionally have spare dates up to six-nine months in advance.

We are moving the Empire programme more towards a weekly touring model, this means we are prioritising shows that can play for a full week, or a split week. These productions will be confirmed before we are able to confirm one/two night performances.

ONE TOUCH THEATRE – MAXIMUM 262 SEATED DEPENDING ON FORMAT

The One Touch Theatre is a fully flexible studio theatre that can be used in a variety of formats. In this space we programme all art-forms, music, comedy and work for families.

We programme the One Touch between six-nine months in advance of the performance dates.

Programming our Cinemas

We programme a variety of world cinema. For a discussion about programming your film at Eden Court contact our Head of Film & Visual Art.

Programming Participatory Work

FOR CHILDREN, YOUNG PEOPLE AND COMMUNITIES

We're always interested to hear from artists and practitioners who would like to work with us through our Engagement programme. Our participatory work with Children, Young People and Communities mirrors our artform specialists: Theatre, Dance, Accessible Arts, Film & Visual Arts.

We're also keen to hear from organisations who want to partner with us.

Our Engagement programme is currently going through a process of review.



CHRISTIAN GARRICK +
THE BUDAPEST CAFÉ ORCHESTRA

Our Programming Considerations

We take a number of factors into account when we are programming our venues. Here are the top three:

DO WE HAVE AN EXISTING RELATIONSHIP WITH THE ARTIST, THE PRODUCER OR THE COMPANY?

If we do is it a positive one? Did audiences respond well to the work last time it was presented at Eden Court? If we don't have an existing relationship with you, have you invited us to see your work elsewhere? If not, please do invite us.

ARTFORM BALANCING

As we present live performance across a wide variety of artforms we carefully balance the programme to ensure a good mix for audiences. For example we would give careful consideration to programming the work of a contemporary dance artist in the OneTouch Theatre too close to Scottish Ballet presenting a contemporary programme in the Empire.

FINANCIAL & ARTISTIC RISK

Some work we present on our stages will never cover its costs through ticket sales. We balance these presentations with work that we are more confident will generate income for Eden Court, to help in turn subsidise our more ambitious programme. We contract our artists and producers with a variety of financial deals including box office splits and guarantees.

How to build a relationship with Eden Court

Ask for a meeting, a Skype call or/and invite us to see your work.

We also appreciate that our geographical location can be challenging for us all. To that end, and to ensure an open and free dialogue with artists and companies, at various times of the year you can meet our team in Glasgow, Edinburgh and London, and of course in the Highlands at Eden Court.

You can sign-up to have a specific meeting or just pop-in. There will be coffee, and it would be great to chat and hear about your work. Our 'Hello, Let's Chat' dates for 2019 are:

SPRING 2019

London	Theatre Trust Resource Centre, Tuesday 9 April, 11:00 – 17:00
Glasgow	Tron Theatre, Thursday 2 May, 10:00 – 16:00
Edinburgh	Lyceum Theatre, Friday 3 May 09:00 – 15:00
Inverness	Eden Court Theatre, Friday 17 May, 10:00 – 16:00

To sign-up and hear more about these events please email:
ngray@eden-court.co.uk

PROJECT Y 2019



Contacting our Artistic Department at Eden Court

Live Performance programming enquiries should be sent to:

CHIEF EXECUTIVE

James Mackenzie-Blackman
jmackenzieblackman@eden-court.co.uk

HEAD OF LIVE PERFORMANCE

Roz Bell / rbell@eden-court.co.uk

Film & Visual Art programming enquiries should be sent to:

HEAD OF FILM AND VISUAL ART

Paul MacDonald-Taylor / ptaylor@eden-court.co.uk

If you're interested in working with children, young people
and the community in a participatory context your enquiry
should be sent to:

HEAD OF ENGAGEMENT

Lucy McGlennon / lmcglennon@eden-court.co.uk

Once you have been programmed at Eden Court your day-to-
day contact in the lead up to your presentation will be:

ARTIST LIAISON MANAGER

Nicola Gray / ngray@eden-court.co.uk

RED DUST ROAD
Sep 2019

CONNECT WITH US

01463 234 234

EDEN-COURT.CO.UK

 @EDENCOURTHEATRE

 @EDENCOURT

 @EDENCOURTHEATRECINEMA

WWW.EDEN-COURT.CO.UK

